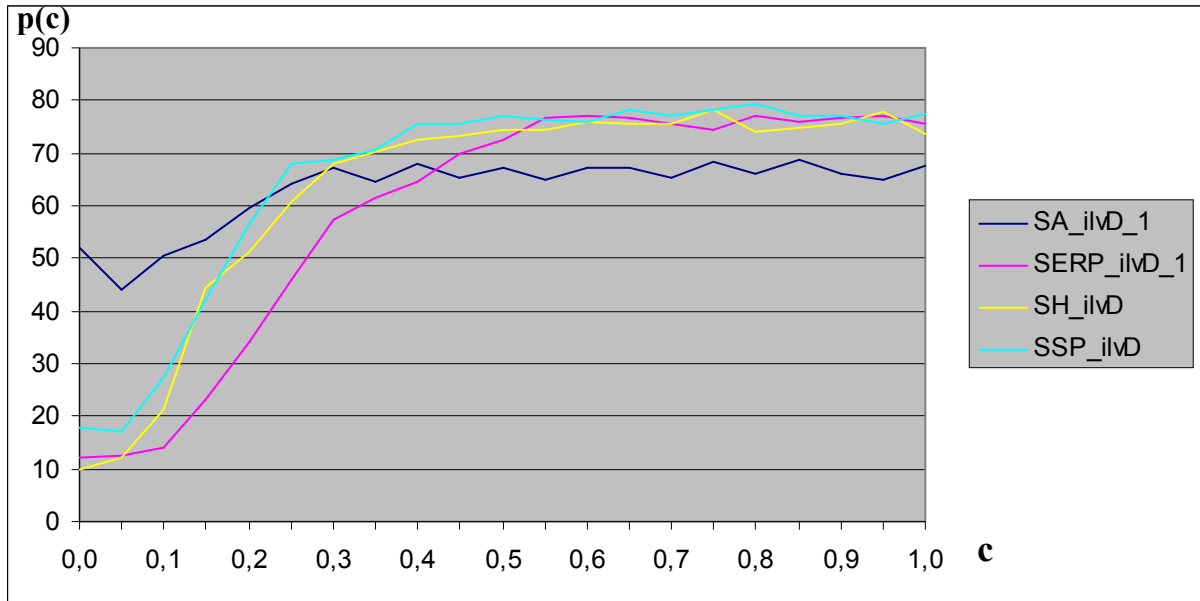
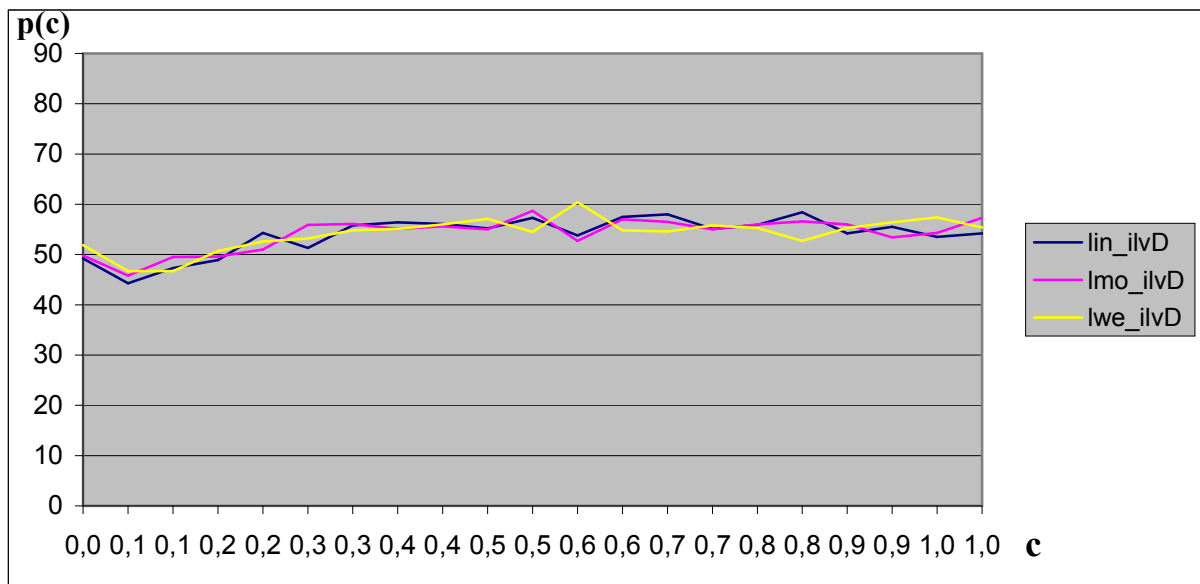


Fig. 32. Probability of the *ilvD* operon termination in *Staphylococcus* and *Listeria*. a) *Staphylococcus*, b) *Listeria*, helix energies are calculated without accounting for RNA triplexes, c) *Listeria*, helix energies are calculated accounting for RNA triplexes. Species names and acronyms are given in Table 2.

a)



b)



c)

